



Quick Guide



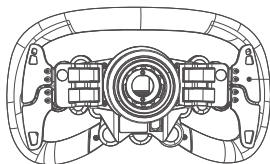
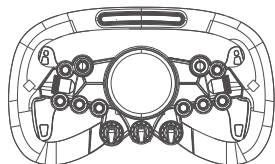
售后客服

Vision GS Steering Wheel



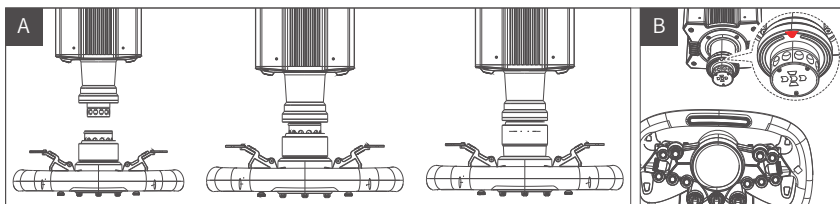
01 Product Features

- Futuristic Design
- 2.85" Customizable HD Display
- Carbon Fiber Reinforced Composite
- 16.7M Color RPM Lights
- Hall Sensor Magnetic Paddle with Dual Clutch
- Programmable Short Travel RGB Buttons
- All-aluminum Quick Release
- Direct Connection to PC



The shifter paddle mounting hole is elongated to allow the paddle distance to be adjusted.

02 QR Use Guide



Method A:

- Align the 6 ball bearings on the wheel QR with the 6 notches on the base QR mount.
- Press the quick release onto the base mount, keeping the bearings and notches aligned.
- The quick release will automatically lock into place; if it doesn't, then remove it, recheck the alignment and try again.
- To remove the wheel, squeeze the black quick release part with the MOZA logo towards the wheel with both hands and pull out the wheel at the same time.

Method B:

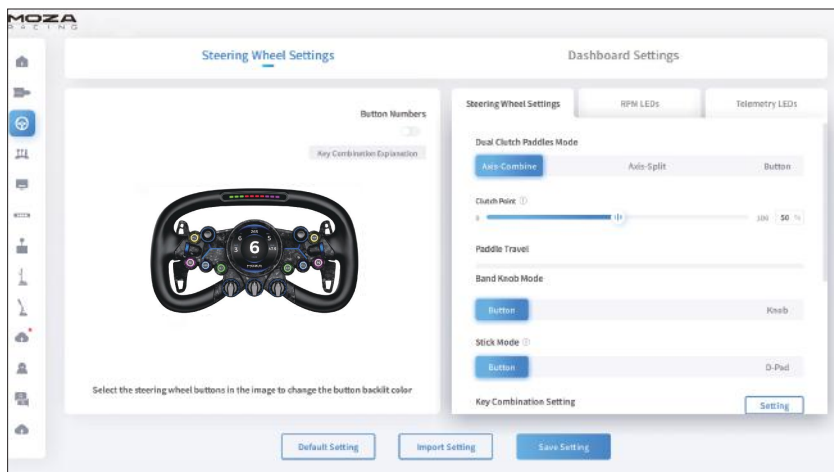
- Rotate the wheelbase until you locate the arrow directly above the base.
- Center the wheel and attach it to the wheelbase.
- To remove the wheel, use both hands to squeeze the black quick release part with the MOZA logo towards the wheel with both hands and pull out the wheel at the same time.

03 Steering Wheel Configuration

The wheel can be set up quickly and easily using MOZA Pit House software.

- Clutch paddle modes: Can be set to composite axis, independent axis, or button.
- Joystick modes: Can be set to button or D-pad.
- RPM indicator switch modes: Choice of rpm, off and constant.

- Indicator modes: There are two modes, mode 1 and mode 2; both are explained in detail when the mouse is hovered over the corresponding option.
- RPM indicator timing: Choose between early, normal, late or custom to match in-game RPM timing.
- Brightness: The brightness of the buttons and RPM LEDs are adjustable.
- Button combinations: Click on the button combination description tab on the upper right corner of the steering wheel page to show a list of button input numbers and programming input combinations.
- Change RPM light colors: When hovering the mouse over the RPM light, a color palette will appear for changing the colors. Simply click on a preferred color to set the indicator light color. Alternatively, clicking the colored icons on the palette opens the RGB color editor for additional color options.
- Change button colors: When hovering the mouse over the buttons on the steering wheel image, a color palette will appear for changing the colors. Simply click on a preferred color to set the button light. Alternatively, clicking the colored icons on the palette opens the RGB color editor for additional color options.
- Select Dash Display Screen UI: Hover over the screen UI to reveal a play button. Click it to choose that UI design.
- Edit Digital Dash Display UI: Hover over the screen UI to reveal an edit button. Click it to edit the display UI. For advanced customizations, access the Dash Display Screen UI Editor in the MOZA Pit house.
- Screen Brightness: Adjust screen brightness by dragging the slider.



(for detailed steering wheel settings and functions, please visit the official website of MOZA Racing)

04 Precautions

- Do not expose the device to liquids or humidity as it may cause fire or electric shock.
- Avoid using the device in direct sunlight.
- Recommended indoor temperature: 15°C ~ 35°C.
- For your safety and well-being, please monitor your gaming time and take breaks as needed.
- The device is not suitable for children under the age of 6, small accessories may pose a choking hazard!
- Children under 13 should have adult supervision.
- It is strictly forbidden to disassemble the equipment by yourself, failure to adhere to this will result in loss of warranty.
- In order to ensure user safety, parts repair or replacement can only be carried out by officially authorized repair centers.
- Do not expose the device to heat sources.
- If you find any abnormality, please stop using it immediately and seek help from MOZA representatives or authorized repair centers.
- Stay tuned to our official website and social media platforms for the latest product updates.

⚠ This product use is limited to activities related to simulated driving, please distinguish between simulated games and reality to ensure safe driving

04 Packing details

1. Vision GS Steering Wheel
2. MOZA stickers
3. Tool Kit: L-shaped Wrench, Plastic Tweezer

05 Spec

Size: 310mm

Face plate material: Carbon fiber reinforced composite

Back plate material: Aviation-grade aluminum alloy

Grip material: Microfiber leather with hand stitching

Dash display: 2.85-inch HD circular screen

Dash display UI: Customizable

Short-travel backlit buttons: 8 pcs

Rear Keys: 2 pcs

Aluminum alloy rotary encoders: 3 pcs

Aluminum alloy thumbwheels: 2 pcs

7-way Funky Switch: 1 pc

Joystick: 1 pc

High Brightness RGB LEDs: 10 pcs

RPM and button colors: 16.7 million colors

Shifter paddles: hall sensor magnetic paddles

Dual-clutch paddles: hall sensor dual-clutch paddles

Intelligent telemetry: Supported

RPM LEDs fully adjustable through MOZA Pit

House: Supported

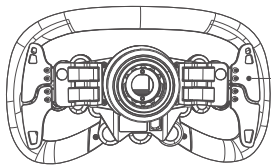
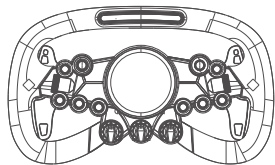
Release method: All-aluminum quick release

Communication method: Wireless and wired

Compatibility: Compatible with all MOZA bases; works with 3rd party bases via the MOZA hub.

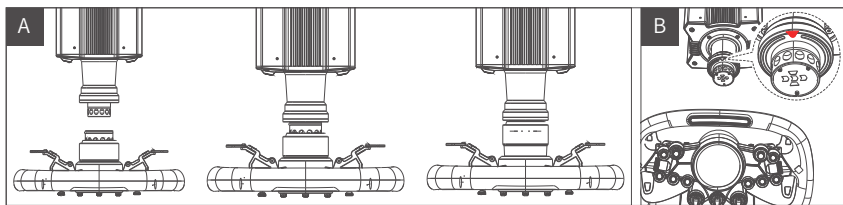
01 产品介绍

- 未来概念造型
- 2.85英寸自定义圆形高清仪表
- 碳纤维复合增强材料
- 1670万色换挡提示灯
- 双离合霍尔磁吸拨片
- 可编程短行程RGB背光按键
- 全铝合金快拆
- 扩展接口可直连PC



拨片固定处是一型孔，
拨片的距离是可以略微的调节

02 快拆使用方法



图A:

1. 将方向盘快拆母头上6颗钢珠的位置与基座快拆公头的6个凹槽对应
2. 将快拆往盘面方向按压
3. 快拆将自动归位锁紧，若无归位，可尝试轻微转动盘面或取下后再安装
4. 如需拆卸盘面，用双手捏住黑色带logo的外壳，同时拔出盘面

图B:

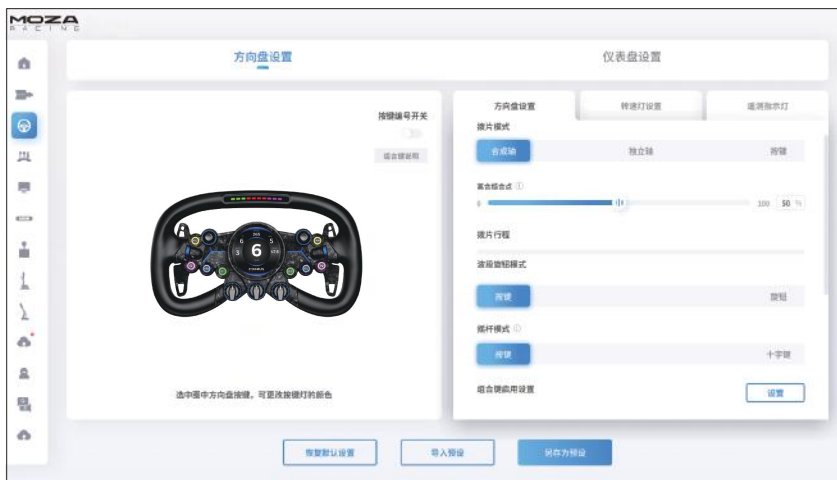
1. 找到基座正上方的箭头
2. 找到方向盘正面，正插进去即可安装
3. 如需拆卸盘面，用双手捏住黑色带logo的外壳，同时拔出盘面

03 方向盘配置

在MOZA Pit House软件中可以方便快捷地对方向盘进行设置

- 离合拨片模式:设置离合拨片操作模式,可设置为合成轴,独立轴和按键
- 摇杆模式:设置摇杆操作模式,可设置为按键和十字键

- 指示灯开关模式:指示灯状态调节,分为随速转动,关闭和常亮
- 指示灯显示模式:共分为模式一和模式二,当鼠标移动到选项上时会弹出详细解释
- 转速提示设置:根据转速与换挡指示灯亮起的时机关系,分为提前型,标准型,极限型和自定义模式
- 转速模式:支持百分比和转速2种模式。百分比模式即转速达到设置的最大转速的百分比时换挡提示灯亮起。转速模式即转速达到设置的转速绝对值时换挡提示灯亮起
- 亮度调节:支持分别调节按键灯亮度和转速灯亮度
- 方向盘组合键:点开方向盘图片右上角的组合键说明,记住组合键后即可快速调节功能
- 指示灯颜色调节:鼠标悬停在灯珠上时,会展示调节颜色的色盘,选中单击即可设置转速灯颜色。点击色盘上彩色的图标会显示RGB颜色的编辑器,支持更多的颜色选择
- 按键灯颜色调节:鼠标悬停在方向盘图片上的按键时,会展示调节颜色的色盘,选中单击即可设置按键灯颜色。点击色盘上彩色的图标会显示RGB颜色的编辑器,支持更多的颜色选择
- 切换仪表:鼠标悬停在仪表UI上时,会展示使用按钮,点击使用后方向盘的仪表盘会展示该仪表UI
- 编辑仪表:鼠标悬停在仪表UI上时,会展示编辑按钮,点击编辑进入仪表编辑器内对仪表UI进行修改。仪表自定义功能详见Pit House中的仪表UI编辑器
- 屏幕亮度:拖动屏幕亮度的滑块支持调节方向盘的屏幕亮度



(详细方向盘设置与功能, 请访问MOZA Racing官网)

04 注意事项

- 严禁将设备暴露在雨水以及潮湿的环境中, 以避免发生火灾/电击
- 严禁在太阳直射的条件下使用设备
- 建议室内温度: 15°C ~ 35°C
- 为了您的健康, 请合理控制游戏时间
- 设备不适用于6岁以下儿童, 小配件可能造成窒息的危险!
- 13岁以下孩童需在家长陪同下使用
- 严禁自行拆解设备, 否则将失去质保资格
- 为保障相关安全, 零部件维修或者更换只能由官方授权维修中心进行
- 禁止将设备暴露在热源中
- 如发现有任何异常, 请立即停止使用并寻求 MOZA 官方或相关授权中心的帮助
- 请关注 MOZA 官网及公众平台以了解最新的相关产品信息

 本产品仅限于模拟驾驶相关活动, 请区别模拟游戏与现实, 安全驾驶。

05 包装清单

1. Vision GS方向盘
2. 贴纸
3. 工具包: L型扳手, 塑料镊子

06 产品参数

- 尺寸: 310mm GT方向盘尺寸
- 外壳材质: 碳纤维复合增强材料
- 背壳材质: 航空级铝合金
- 环身材质: 超纤皮手工缝线
- 显示屏: 2.85英寸高清圆形显示屏
- 显示屏UI: 可自定义UI
- 正面短行程背光按键: 8个
- 背部按键: 2个
- 正面铝合金旋钮: 3个
- 铝合金拇指拨轮: 2个
- 七向开关: 1个
- 万向摇杆: 1个
- 换挡提示灯: 10颗LED顶置换挡提示灯
- 换挡提示灯和按键灯可调颜色: 1670万色
- 换挡拨片: 碳纤维磁吸霍尔换挡拨片
- 双离合拨片: 碳纤维霍尔双离合拨片
- 智能遥测: 支持
- 通过MOZA Pit House设置灯光: 支持
- 拆装方式: 全铝合金定制快拆
- 信号传输方式: 无线和导电滑环
- 兼容性: MOZA全系基座
- 第三方基座拓展接口: 支持

产品保修卡

产品型号		购买日期	
用户姓名		用户电话	
产品条码		通讯地址	

经销商信息(签章)

产品保修条例

保修期

自购机日起,基座主体,方向盘,踏板和仪表显示屏保修12个月。设备外壳、说明书、线材、螺丝、扳手、包装等不在"一年免费保修服务"范围内,但您可以选择有偿服务。

购买者在以下条件下不享受免费保修服务,但您可以选择有偿服务。

1. 超过三包有效期的;
2. 无三包凭证及有效发票的,但能够证明该产品在三包有效期内的除外;
3. 保修凭证上的型号与修理产品型号不符或者涂改的;
4. 非本公司特约维修人员拆动造成损坏的;
5. 因不可抗力造成损坏的;
6. 未按产品使用说明书要求使用、维护、保养而造成损坏的。

保修期限鉴于产品部位、不同国家法律法规等差异,将有所不同。相关国家与区域的保修期限,请咨询MOZA官方或购买时联系的MOZA授权经销商。

