

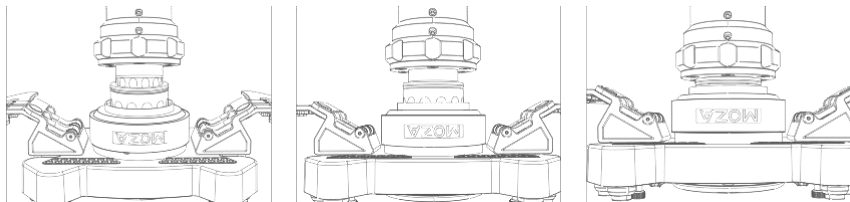
RS V2 Steering Wheel



01 Product Description

- Dual-Clutch Photoelectric Magnetic Paddles.
- RGB Programmable Flow Shift Light.
- 10 illuminated programmable mechanical Keys
- Racing Quick Release
- Aluminum Alloy Back Shell

02 How to Use the Quick Release OR Quick Release Setup



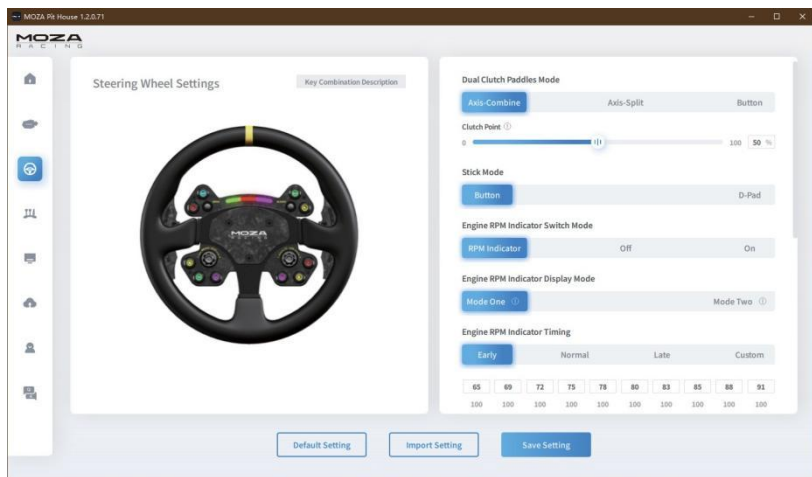
1. Align the 6 steel balls on the steering wheel quick release female connector to the corresponding 6 grooves on the base quick release male connector.
2. Press the steering wheel down to join the connectors.
3. Once locked check to ensure the steering wheel is connected to base by rotating the wheel.
4. To remove the steering wheel, pull up the golden sleeve with both hands and remove the steering wheel at the same time.

03 Racing Wheel Configuration

The steering wheel can be set conveniently and quickly in the MOZA Pit House suite software.

- Down paddle mode: Set the mode of double clutch paddles, which can be set as left and right composite axes, left and right independent axes and keys.
- Speed follow-up: Turn on or off the linkage between LED shift indicator and speed.
- Indicator display mode: It is divided into mode 1 and mode 2. When the mouse moves over the option, a detailed explanation will pop up.
- Speed prompt setting: It is divided into advance type, standard type and limit type, according to the relationship between speed and the time when the shift indicator light is on.
- Brightness adjustment: Adjust the brightness of the shift indicator.
- Dial calibration: click here to calibrate the dial if the dial sensing is abnormal.
- Indicator Light Color Adjustment: 7 colors can be set separately for each LED, adjust the color of the MOZA Flow shifter according to your preferences.

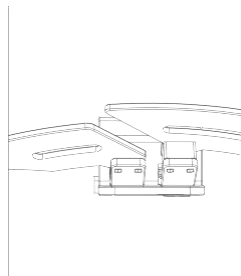
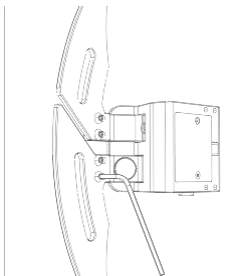
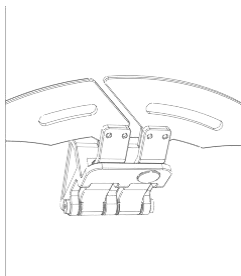
Enter the debugging mode by pressing buttons in a sequence. You can set the color of the illuminated button as follows: Press and hold the thumb knobs (BRAKE BIAS and TC CON) on the left and right at the same time until the gear shift indicator flashes, and then enter the button setting mode. Each time you press the button, you can change a color, and there are 9 colors in total.



(for detailed steering wheel settings and functions, please visit the official website of MOZA Racing)

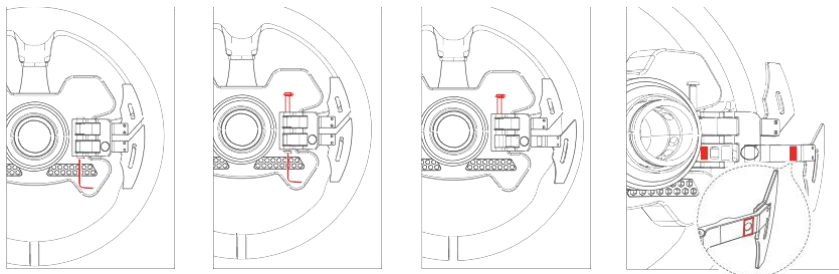
04 Installation of Paddle Approach Block

Place the steering wheel on a flat surface facing down, use a hexagonal wrench to remove the screw on the side of the trigger lever of the shift paddle, and then use a wrench to lift the latch from the side of the magnetic paddle, and pull the trigger lever of the paddle outward to obtain the best space for disassembling and assembling paddles; use a hexagonal wrench to remove the screws on the shift paddles, put on the heightening block and tighten with the long screws, and finally put the latch back in place and tighten screws. The heightening block can help shorten the distance between the magnetic shifter paddles and hands by 8mm.



05 Installation of Magnetic Suction Paddle Mute Pad

Place the steering wheel on a flat surface, with the front facing down. Use a hexagonal wrench to remove the screw on the side of the trigger lever, then use a wrench to lift the latch from the side of the magnetic paddle (NOTE: you do not need to push it out completely. Just separate the trigger lever and the latch would be fine). Apply the first silencer pad on the back of the magnetic hole and the square hole on the shifter paddle (if it is inconvenient to operate, you can lift the latch completely). Apply the other silencer pad to the position of the paddle base as shown in the picture. Finally return the latch into place and tighten the screws.



For more information and tutorial videos, please log in to the official website (www.mozaracing.com).

06 Packing List

1. RS steering wheel
2. tool kit:

Hexagon screwdriver

8mm aluminum alloy approach block x4

M3x14 screw x8

Mute pad x4

07 Product Spec

Frame material: Brushed aluminum alloy.

Panel material: Forged Carbon Fiber.

Rear shell material: Aluminum alloy.

Paddle material: 3mm thick forged carbon fiber

Size: 13 inches (325mm).

Magnetic paddle: 2.

Double clutch paddles: 2.

Mechanical keyboard texture buttons: 10 (can be illuminated, 9 colors adjustable)

20 Section knob (can be pressed): 2. **Universal rocker (can be depressed):** 2. **Highlight led RGB beads:** 10.

LED color: 7-color custom.

Intelligent telemetry: Supported.

Lights setting via Moza Pit House: Supported.

Steering Wheel Quick Release: MOZA Racing Quick Release.

Power supply mode: Wireless or Wire.

Signal transmission mode: Wireless or Wire

Induction mode of magnetic paddle: Photoelectric.

Magnetic suction paddle mode:

Double Clutch / Single Clutch / Switch.