

MOZA GS steering wheel

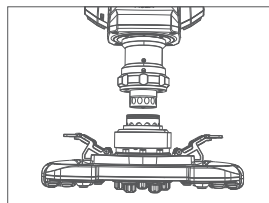
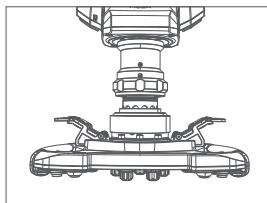
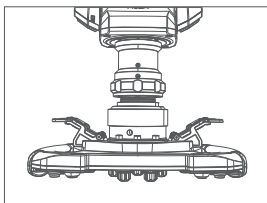
Push it to the Limit



01 Product introduction

- Alcantara from Italy
- 300mm standard size of GT wheel
- Forged carbon fiber framework and paddle
- Optical electromagnetic suction dual-clutch paddles
- RGB shift indicator
- Programmable luminous keys (9 colors) and knobs
- D1 racing level quick disassembly
- Wireless power supply and communication technology

02 Steps of quick release



1. Match the position of the 6 steel balls on the female quick release head of the steering wheel to the 6 grooves on the quick release male head of the base
2. Press the quick release to the direction of the panel
3. Quick release will automatically return to the position and lock, if there is no return, you can try to rotate the panel slightly or remove it before installing
4. If you need to remove the disk surface, pinch the golden part with both hands, and pull out the disk surface at the same time

03 Steering wheel configuration

The GS steering wheel can be set up conveniently and quickly in the MOZA Pit House software.

- Clutch paddle mode: clutch working mode setting, divided into synthetic shaft, independent shaft and button.
- Clutch coupling point: adjust the dual clutch coupling point in synthetic shaft mode, the default is 50%, and the setting range is 5%~95%
- Joystick mode: Set the joystick operation mode, which can be set as buttons and cross keys
- Indicator switch mode: the indicator status is adjusted, divided into rotating with speed, off and always on
- Indicator display mode: It is divided into mode 1 and mode 2, and a detailed explanation will pop up when the mouse is moved to the option
- Speed prompt setting: According to the timing relationship between the speed and the shift indicator light, it is divided into advanced type, standard type, limit type and custom mode
- Brightness adjustment: adjust the brightness of the shift indicator
- Indicator color adjustment: drag the color block you like to the indicator to change the color

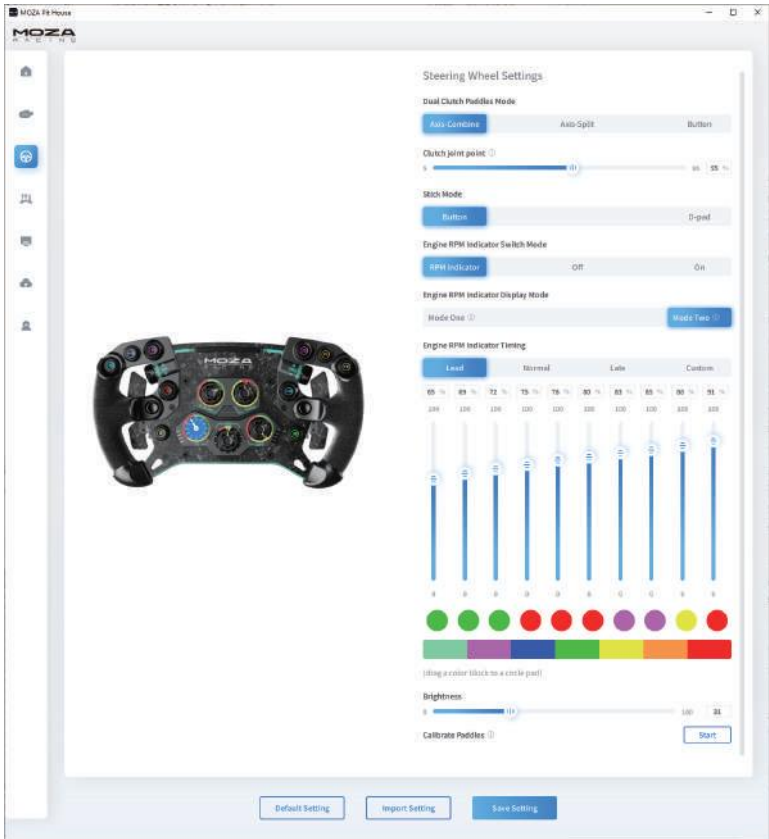
- Pickle calibration: when the pickup sensor is abnormal, click here to perform the paddle calibration

Enter the debugging mode through the quick release button, you can set the color of the illuminated button, the specific operation is as follows:

Press and hold the thumb knobs (BB and ERS) on the left and right at the same time until the gear shift indicator flashes, and then enter the button setting mode.

Each time you press the button, you can change a color, and there are 9 colors in total.

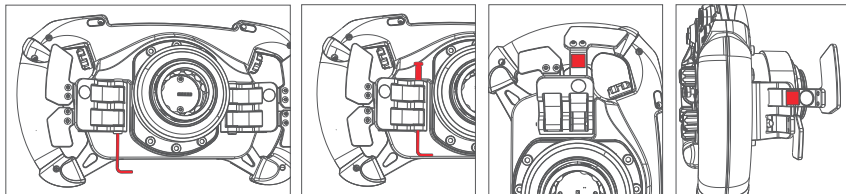
Press and hold the right dual-clutch paddle with your right hand, and at the same time move the left universal joystick left and right, you can quickly switch the screen UI interface



(for detailed steering wheel settings and functions, please visit the official website of MOZA Racing)

04 Installation of magnetic paddle mute pad

Place the steering wheel on a flat surface with the plate facing down, use a hexagonal wrench to remove the screw on the side of the shift paddle trigger lever, and then use the wrench to lift the latch from the side of the magnetic paddle (there is no need to push it out completely, only the magnetic paddle The trigger lever and the latch can be separated), and then stick the mute pad on the back of the magnet hole and the protruding position on the back of the trigger lever, as shown in the figure, and finally return the latch and replace the screw



05 comparison table of English abbreviations of keys and knobs

FL: automatic flashing light

Box: inbound instruction

S1: custom button 1

S2: custom button 2

Pl: activate / deactivate speed limit in maintenance area

Tr: Fleet communication

BB: brake ratio adjustment

Ers: energy recovery regulation

P: Park gear

WIP: wiper

R: Reverse gear

N: Neutral

E-brake: engine brake adjustment

Turbo: turbine pressure regulation

TC: traction control adjustment

Abs: anti lock control and adjustment

Diff: differential adjustment

06 Packing list

1. GT steering wheel
2. tool kit: Hexagon screwdriver / Mute pad X4
3. Portable cloth bag

07 Product parameters

Ring body coating material: Alcantara from Italy

Frame material: forged carbon fiber

Panel material: forged carbon fiber

Pickle material: 3mm thick forged carbon fiber

Size: 12 inches (300mm)

Magnetic picks: 2

Double clutch paddles: 2

Mechanical keyboard texture buttons: 10 (can be illuminated, 9 colors adjustable)

Front knobs: 5

Thumb knobs: 2

Universal joystick: 2

Highlight LED RGB lamp beads: 10 pcs

LED color: 7 colors customized

Intelligent telemetry: support

Setting the light through MOZA Pit House:

Support

Disassembly method: D1 reality racing quick release

Power supply mode: wireless

Signal transmission method: wireless

Magnetic pickup induction method: photoelectric non-contact type

Magnetic paddle mode: dual-clutch/single-clutch/switch