



RM HD Racing Meter

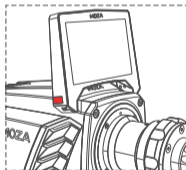
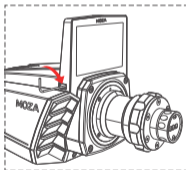
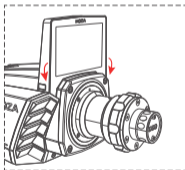
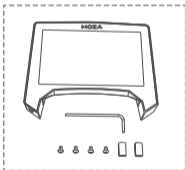
Real-Time Data Displayed in Panoramic HD

01 Features

- 5-inches with 16.7 million colors.
- 800x480 resolution and 60HZ refresh rate.
- More than ten key competition data parameters.
- 7 Digital Dash UIs.
- Quick Assembly Tech.
- More than 10 racing sims are supported.

02 Installation Instructions

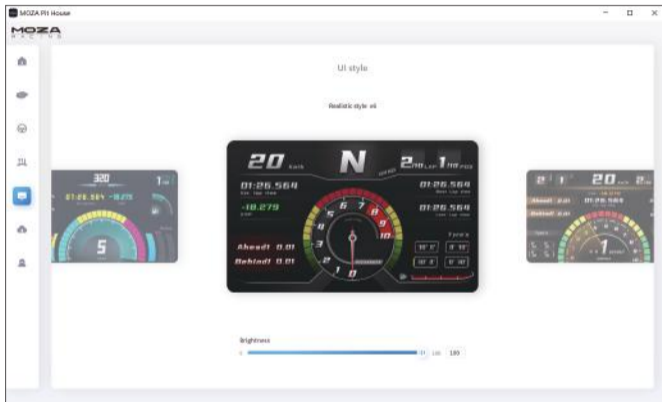
Press the top pin on the right side of the display into the interface on the right side of the base. Use 4 M3 round head screws to screw in and fix the notch on the side of the screen. Then place the rubber plug into the notch.



⚠ Note: Make sure that the thimble is vertically against the female connector for only once. If no light comes on the display screen, please unplug the thimble completely and re-insert it again. Do not move the display screen under the compressed state to avoid damage to the thimble structure. Better to finish the installation with the assistance of another person.

03 Display Setting

In the Pit house display setting interface, click left and right to change the UI interface, and to adjust the display brightness.



For more information and instructional videos, please visit the official website (MOZARACING.COM).

04 Packing List

- RM meter
- Hex screwdriver
- M3 screw x4
- Rubber plug x2