

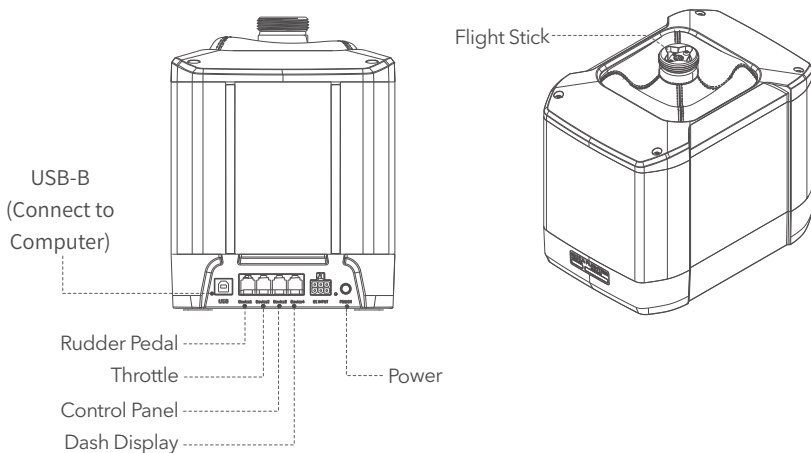
AB9 Force Feedback Base



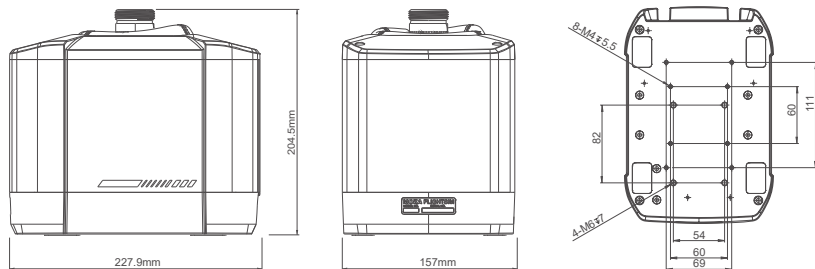
01 Product Introduction

- MCLS Force Feedback Algorithm
- 12N·m Peak Torque
- Dual Servo Motors
- Aviation-Grade Aluminum Alloy Body
- High-resolution Encoder
- Compatible with Leading Flight Sim Games
- Quiet and Seamless Design
- MOZA Cockpit Control Software

02 Base Connection Ports



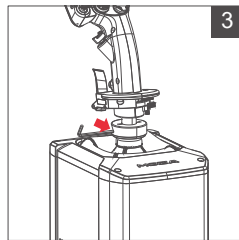
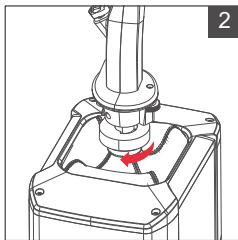
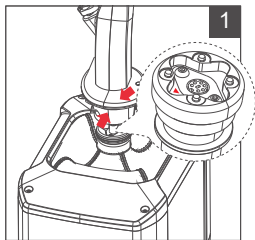
03 Parameters



04 Installation Guide

Installing the Flight Stick

1. Connect the flight stick to the base aviation connector in the direction indicated by the forward facing arrow (refer to diagram1).
2. Rotate the nut ring on the flight stick clockwise to tighten (refer to diagram2).
3. Use the provided wrench to further tighten until the flight stick is securely connected to the base (refer to diagram3).



Mounting the Base

1. Desktop Clamp Mode (Desk clamp requires separate purchase):
 - a. Secure the MOZA AB9 base to the desktop clamp using 4-6 screws at the bottom.
 - b. Place the desktop clamp on the desk and tighten the star-shaped handle until the clamp is securely attached to the desk.
2. Desktop Clamp Hanging Mode (Desk clamp requires separate purchase):
 - a. Adjust the height as desired, then secure the desktop clamp's 4 screws onto the nuts on the AB9's side groove.
 - b. Tighten the star-shaped handle of the desktop clamp until it is secure.
3. Alternative Installation Methods:

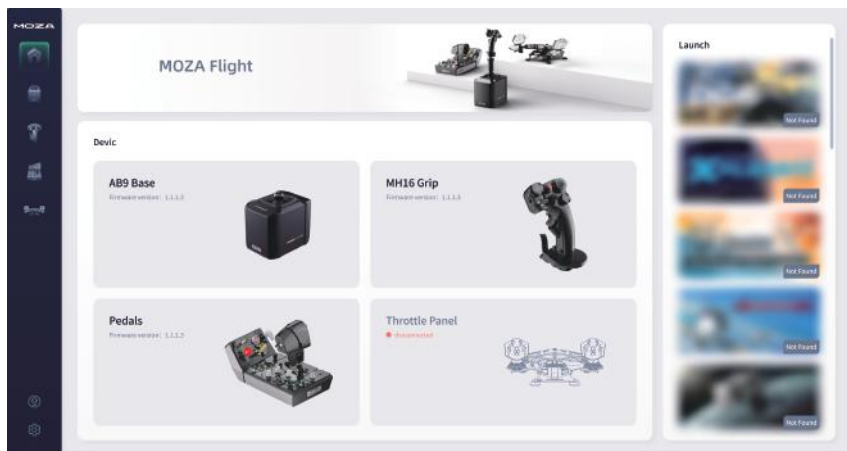
The base can also be secured to some pre-made simulator brackets using the screw hole spacing at the bottom.

Using the Product

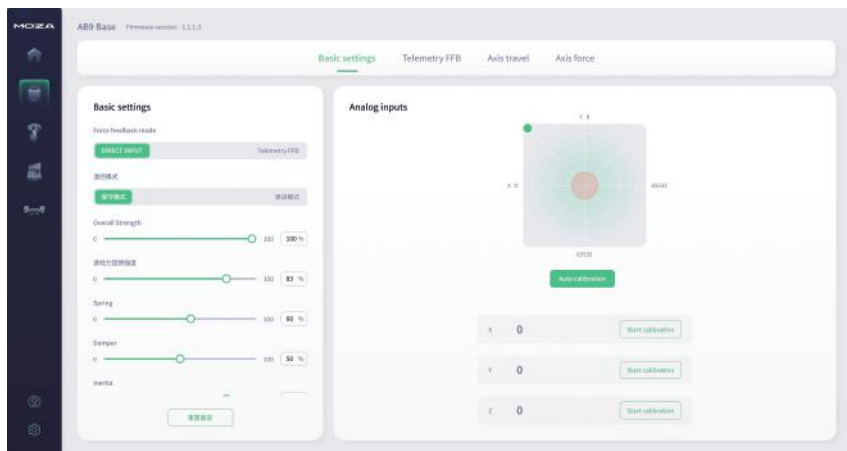
1. Connect the power cable and USB Type-B cable to their respective ports at the back of the AB9 Force Feedback Base. Plug the power cable into a 220V outlet. Press the switch briefly to power on (short press for on, long press for off). A quick flashing of the power indicator confirms successful power connection.
2. Connect the USB Type-A end to your PC. Once connected, the power indicator will remain lit. Visit www.mozaracing.com to download and install the MOZA software from the help center to begin your flight experience. For additional information and tutorial videos, please visit the official website.

05 Software Introduction

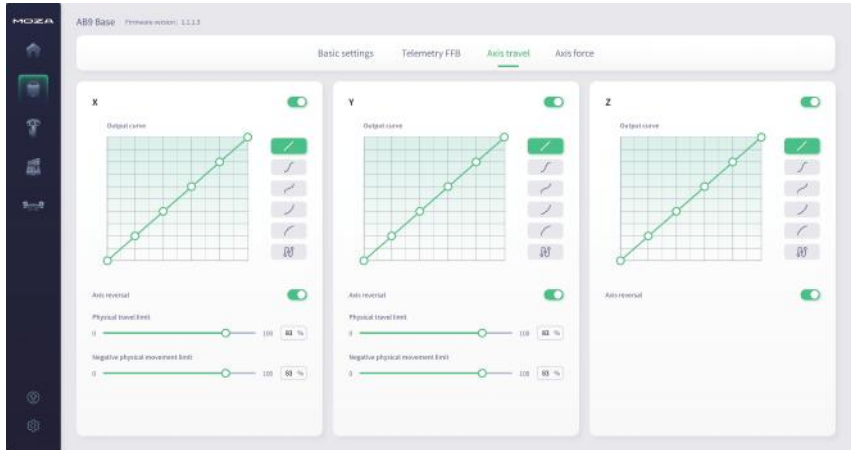
The main page displays the status of connected devices, including the base, flight stick, throttle, and rudder pedals.



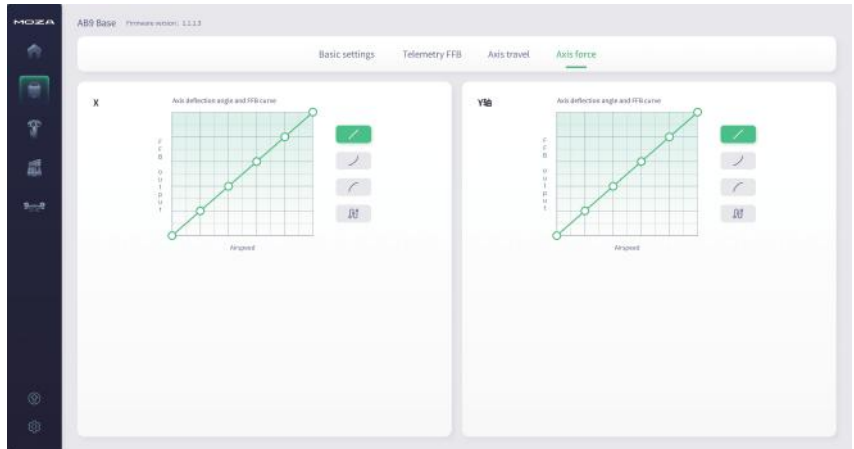
Basic Settings: Easily access game settings and choose preset force feedback modes, ideal for beginner players to quickly get setup and flying. Real-time monitoring of the flight stick's coordinate position is also available.



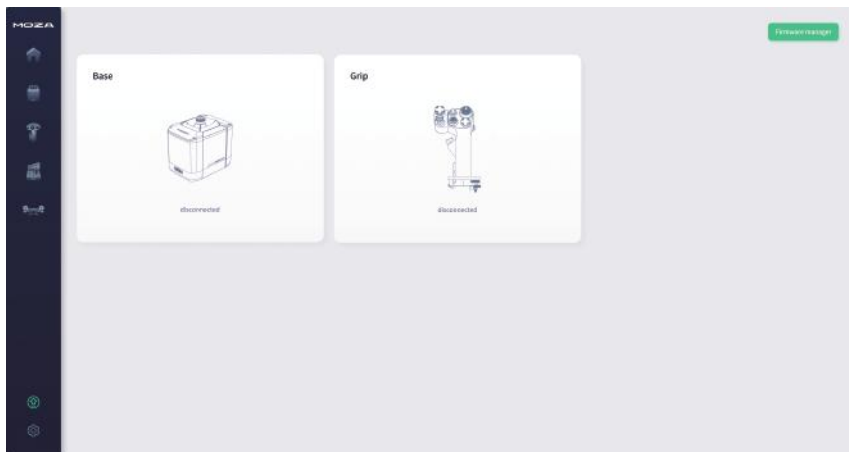
Axis Range Settings: Adjust the sensitivity and dead zone of individual motors to match personal preferences.



Axis Force Feedback Settings: Allow users to finely adjust the force feedback intensity of each segment to match the flight characteristics of specific aircraft.



One-Click Firmware Upgrade: Easily update the MOZA flight simulation ecosystem with the latest features in one click.



For detailed software instructions, please visit the MOZA Racing official website (www.mozaracing.com) help center page.

06 Specs

Supported Platform: PC

Maximum Limit Angle: $\pm 20^\circ$

Main Body Material: Aviation-Grade Aluminum Alloy

Peak Torque: 12N·m

Rated Voltage: 110V~220V AC > 36V DC

Rated Current: 6A

Rated Power: 216W

USB Refresh Rate: 1000Hz

Base Indicator Light: Supports displaying base status

Connection Ports: Power, data, throttle, rudder pedals, etc.

Installation Method: desktop or rig

Desktop Clamp: Optional

07 Precautions

- Do not expose the device to liquids or humidity as it may cause fire or electric shock.
- Avoid using the device in direct sunlight.
- Do not use MOZA flight sim gear with the MOZA racing gear.
- Recommended indoor temperature: 5°C ~ 35°C.
- For your safety and well-being, please monitor your gaming time and take breaks as needed.
- The device is not suitable for children under the age of 6, small accessories may pose a choking hazard!
- Children under 13 should have adult supervision.
- It is strictly forbidden to disassemble the equipment by yourself, failure to adhere to this will result in loss of warranty.
- The equipment must be connected with the factory-supplied power supply to ensure the electrical safety and the protection of user rights and interests.
- In order to ensure user safety, parts repair or replacement can only be carried out by officially authorized repair centers.
- Non-standard power supplies are strictly prohibited even if data such as related voltages match.
- Use only AC power provided by a standard wall outlet to avoid damage to the product.
- Do not expose the device to heat sources.
- Unplug the power cord of the device if it will not be used for a long time.
- If you find any abnormality, please stop using it immediately and seek help from MOZA representatives or authorized repair centers.
- Stay tuned to our official website and social media platforms for the latest product updates.