



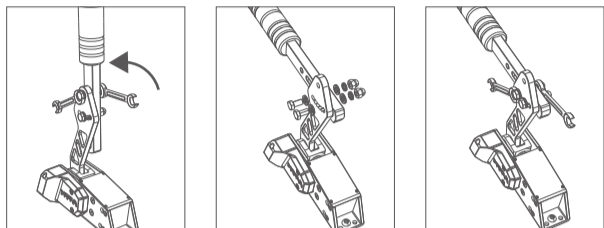
Quick Guide

01 Product Introduction

- Aviation-grade Aluminum
- Two Modes
- Adjustable Height & Angle
- Direct connection to PC
- Easy to Fix
- 16-bit High Precision Angle Sensor
- Adaptable Brake Force & Travel

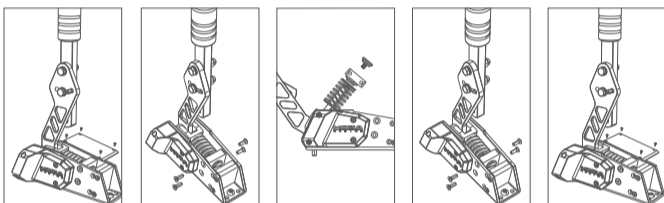
02 Lever Height & Angle Adjustment

Unscrew the nuts with two open-end wrenches counterclockwise, adjust the lever's height and angle, and then tighten the screws. (It's recommended to apply the flat and spring pads supplied in the tool kit to avoid scratches.)



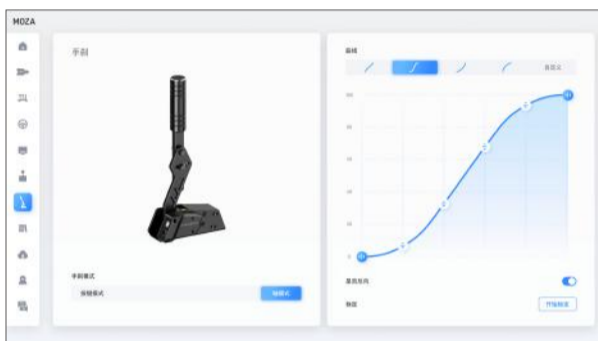
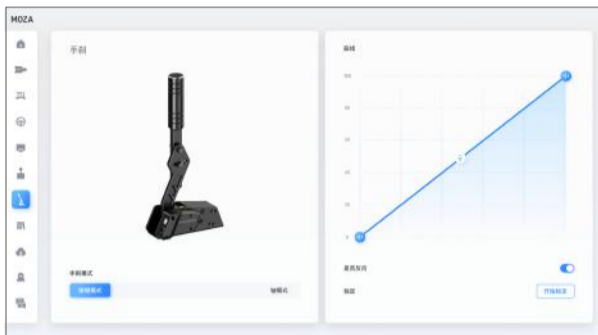
03 Spring Replacement

1. Remove the cover above the spring with a Phillips screwdriver
2. Remove the baffles on both sides with an Allen wrench
3. Pull the handbrake lever until the spring and the baffles tilt
4. Remove the screws with a flat-head screwdriver and install the spring
5. Adjust the baffle, put the cover back in place, and tighten all screws



04 Configuration in MOZA Pit House

1. Set the start and end points to adjust handbrake travel and eliminate the dead zone.
2. Adjust the output curve to change the correlation between mechanical travel and signal output at the initial and final stages.
3. Click the calibration button and follow the instructions to re-calibrate if you experience any handbrake output abnormalities.
4. Two mode options: on/off button mode or axis mode with continuous brake travel.



05 Package Content

- Handbrake base
- Handbrake lever
- 1 * Philips screwdriver
- 1 * Flathead screwdriver
- 1 * Spring (blue color)
- 2 * Hex screws
- 2 * data cables (USB-b, RJ45)
- 2 * hex screws (come with flat pads, spring pads, and nuts)
- 2 * umbrella head screws (come with flat pads)
- 3* Allen wrenches
- 1*Damper
- 2*Damper spacers

06 Product Parameters

- Material: Aluminum
- Dimension: 153* 68.3* • 365.5mm
- Adjustable resistance: supported
- Horizontal lever mount: supported
- Side-mount: optional
- Bolt pattern: M6
- Net weight: 0.7 KG



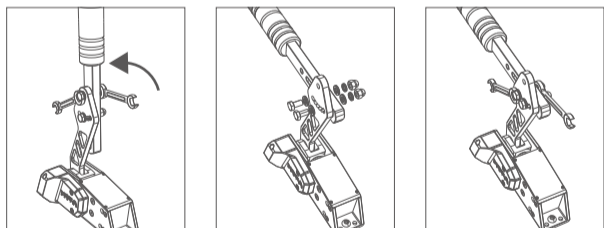
Quick Guide

01 产品介绍

- 航空级铝合金
- 双模式多角度任意切换
- 手柄高度可调
- 便捷安装
- 16位高精度角度传感器
- 力度行程可调
- 多接口设计

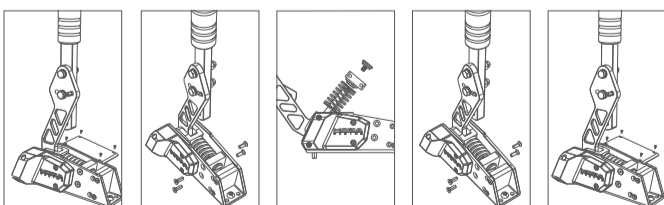
02 手刹握柄的高度与角度调节

1. 使用两个开口扳手固定住六角螺丝与螺帽两侧；
2. 逆时针拧松螺帽，调整好适合的握杆高度与角度后安装回螺帽并拧紧（请注意安装与螺丝搭配的平垫与弹垫，避免刮花握杆外侧）。



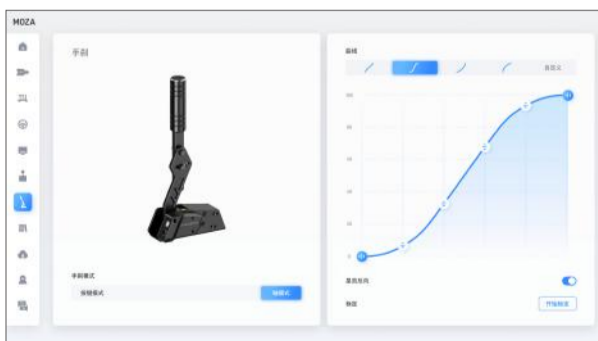
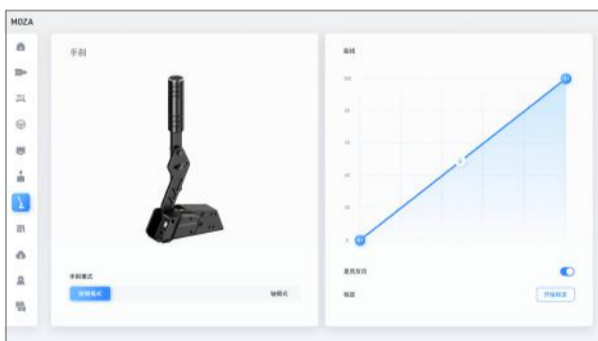
03 弹簧和阻尼块的更换

1. 使用十字螺丝刀取下弹簧上部的盖板；
2. 使用六角扳手取下两侧安装弹簧挡块的螺丝；
3. 沿外侧拉动手刹握杆使弹簧与挡板翘起；
4. 使用一字螺丝刀将螺丝取下并更换合适强度的弹簧；
5. 将挡板调整到合适位置后锁紧螺丝，最后将盖板复位并锁紧全部螺丝。



04 在MOZA Pit house中的设置

1. 如图，可在Pit house中设置手刹的起始点和终点以改变其行程或消除死区
2. 可通过曲线调节界面调节手刹前段和后段的机械行程与信号输出的关系
3. 若手刹输出异常，可点击标定按钮，按照提示重新标定
4. 可选择按键模式或轴模式，将手刹切换为仅具备开关的按键或有连续行程的轴



05 包装清单

- 手刹座
- 握杆
- 1* 十字螺丝刀
- 1* 一字螺丝刀
- 1* 弹簧(蓝)
- 2* 开口扳手
- 2* 数据线 (Type-B, RJ45)
- 2* 外六角螺丝(带平垫, 弹帽)
- 2* 内六角伞头螺丝(带平垫)
- 3* 六角扳手
- 1* 阻尼块
- 2* 阻尼块垫片

06 产品参数

- 材质: 铝合金
- 尺寸: 153 * 68.3 * 365.5mm
- 可调阻力: 支持
- 横置手柄安装: 支持
- 侧装支架: 选配
- 安装孔: M6
- 净重: 0.7Kg



尺寸: 260*160mm(对折后130*160mm)

材质: 80g书写纸

双面印刷

对折线