



Quick Guide

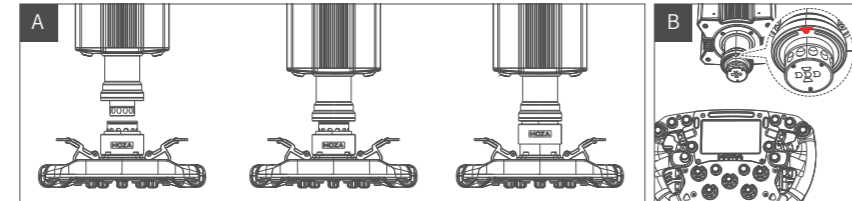
FSR2 Formula Wheel



01 Product Introduction

- 4.3-inch Touchscreen HD Display
- Fully Customizable UI System
- Toray 3K Twill Carbon Fiber
- 6 Magnetic Paddles
- 16.7 Million Color Shift Indicator and Flag Lights
- Aerospace-grade Aluminum Alloy

02 Quick Release Instructions



Method A:

- Align the 6 ball bearings on the wheel QR with the 6 notches on the base QR mount.
- Press the quick release onto the base mount, keeping the bearings and notches aligned.
- The quick release will automatically lock into place; if it doesn't, then remove it, recheck the alignment and try again.
- To remove the wheel, squeeze the black quick release part with the MOZA logo towards the wheel with both hands and pull out the wheel at the same time.

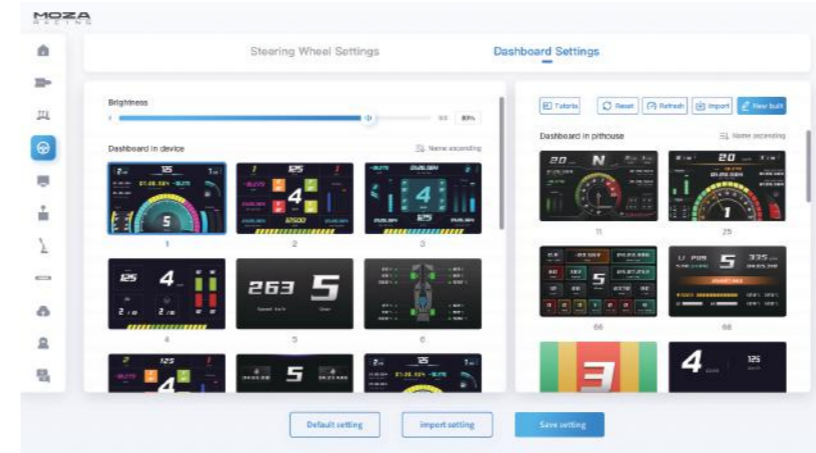
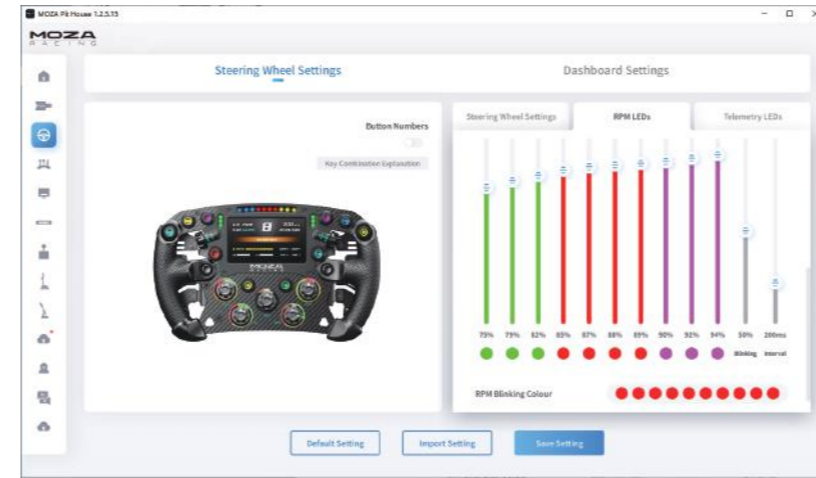
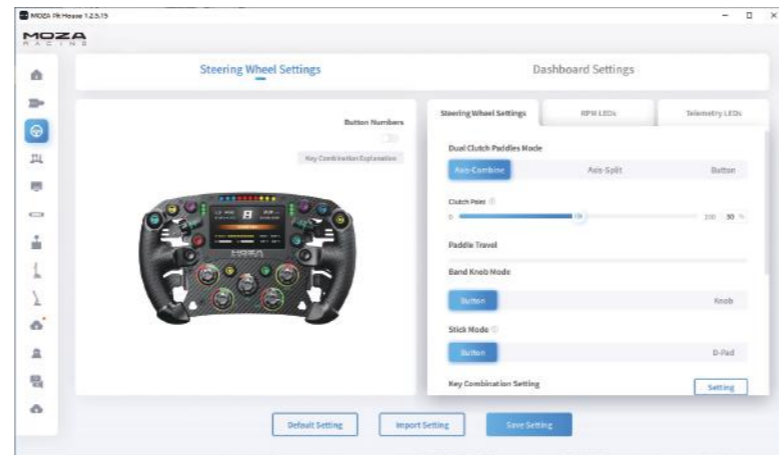
Method B:

- Rotate the wheelbase until you locate the arrow directly above the base.
- Center the wheel and attach it to the wheelbase.
- To remove the wheel, use both hands to squeeze the black quick release part with the MOZA logo towards the wheel with both hands and pull out the wheel at the same time.

03 Wheel Configuration

Using MOZA Pit House, our software suite, the FSR2 steering wheel can easily be set up and configured to your liking.

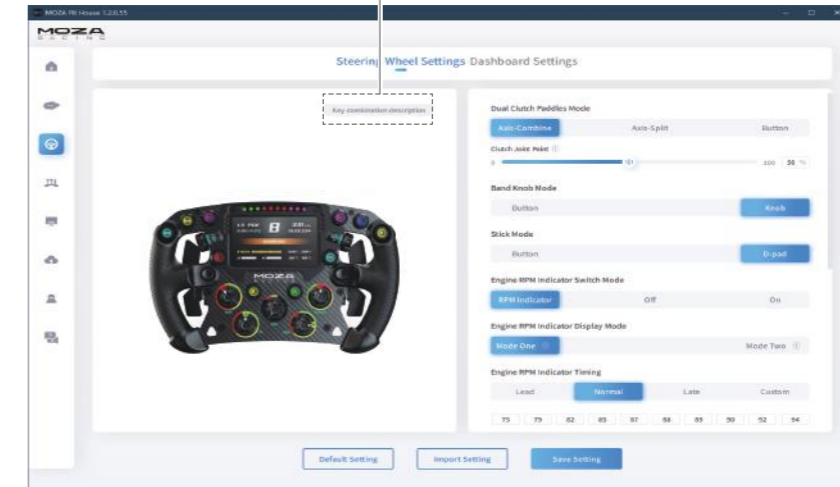
- RPM indicator switch modes: Choice of rpm, off and constant.
- Indicator modes: There are two modes, mode 1 and mode 2; both are explained in detail when the mouse is hovered over the corresponding option.
- RPM indicator timing: Choose between early, normal, late or custom to match in-game RPM timing.
- Brightness: The brightness of the buttons and RPM LEDs are adjustable.
- Button combinations: Click on the button combination description tab on the upper right corner of the steering wheel page to show a list of button input numbers and programming input combinations.
- Change RPM light colors: When hovering the mouse over the RPM light, a color palette will appear for changing the colors. Simply click on a preferred color to set the indicator light color. Alternatively, clicking the colored icons on the palette opens the RGB color editor for additional color options.
- Change button colors: When hovering the mouse over the buttons on the steering wheel image, a color palette will appear for changing the colors. Simply click on a preferred color to set the button light. Alternatively, clicking the colored icons on the palette opens the RGB color editor for additional color options.
- Select Dash Display Screen UI: Hover over the screen UI to reveal a play button. Click it to choose that UI design.
- Edit Digital Dash Display UI: Hover over the screen UI to reveal an edit button. Click it to edit the display UI. For advanced customizations, access the Dash Display Screen UI Editor in the MOZA Pit house.
- Screen Brightness: Adjust screen brightness by dragging the slider.



(For further information on specific steering wheel settings or functions using the MOZA Pit House Suite, visit our official website at www.mozaracing.com)

04 Button Combination Functions

Utilize button combinations to adjust maximum steering angle, switch joystick modes, configure dashboard UI interfaces, set base parameters, and more. Detailed instructions can be found on the Steering Wheel Settings page.



05 Packing List

1. FSR2 Racing Formula Wheel
2. Tool kit: Hexagon screwdriver
3. Cloth bag

06 Specifications

- Size: 280mm standard formula wheel
- Display Size: 4.3 inches
- Display Resolution: 800x480
- Grip Material: Microfiber leather
- Frame & Face Plate Material: 5mm thick carbon fiber
- Shifter Material: 3mm thick carbon fiber
- Back Plate Material: Aerospace-grade aluminum alloy
- Shifter Paddles: 2
- Function Paddles: 2
- 7-Way Switches: 2
- Flag Indicators: 6
- Clutch Paddles: 2
- Backlit Programmable Mechanical Buttons: 10
- Thumb Encoders (depressible): 2
- Rotary Encoders: 5
- LED RGB Beads: 10
- LED Colors: 16.7 million
- Intelligent Telemetry: Supported
- Fully Adjustable RPM LEDs through MOZA Pit House: Supported
- Release Method: MOZA All-aluminum QR
- Communication Method: Wireless and via conductive slip ring Compatibility
- Sensor: Non-contact hall sensor
- Clutch Paddle Modes: Composite axis, independent axis, or button