

Connect to the Base 连接基座

1. Connect the Z-Axis module to the base aviation connector in the direction indicated by the forward facing arrow (refer to diagram1).

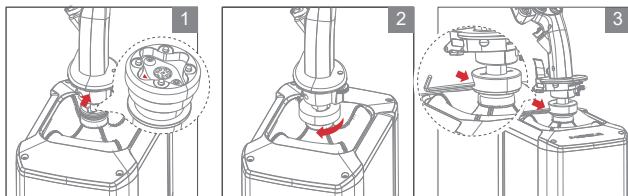
抽出Z轴模块的连接线, 将连接线航空头上的箭头与基座刻度线对齐后插入到底, 保证连接线稳固

2. Rotate the nut ring on the Z-Axis module clockwise to tighten (refer to diagram2).

顺时针方向旋紧Z轴模块上的螺母环

3. Use the provided wrench to further tighten until the Z-Axis module is securely connected to the base (refer to diagram3).

用附赠的扳手进一步增大旋紧力, 直到Z轴模块与基座之间的连接稳固



Locking Mechanism 锁定功能

To disable the Z-axis function and use it only as an extension kit, locate the screw hole and tighten the screw clockwise with the supplied wrench until it locks.

若无计划使用组件Z轴功能, 仅使用组件的延长杆功能, 找到设备的螺丝孔位置, 使用附赠的扳手顺时针拧紧螺丝至设备不能被转动

